



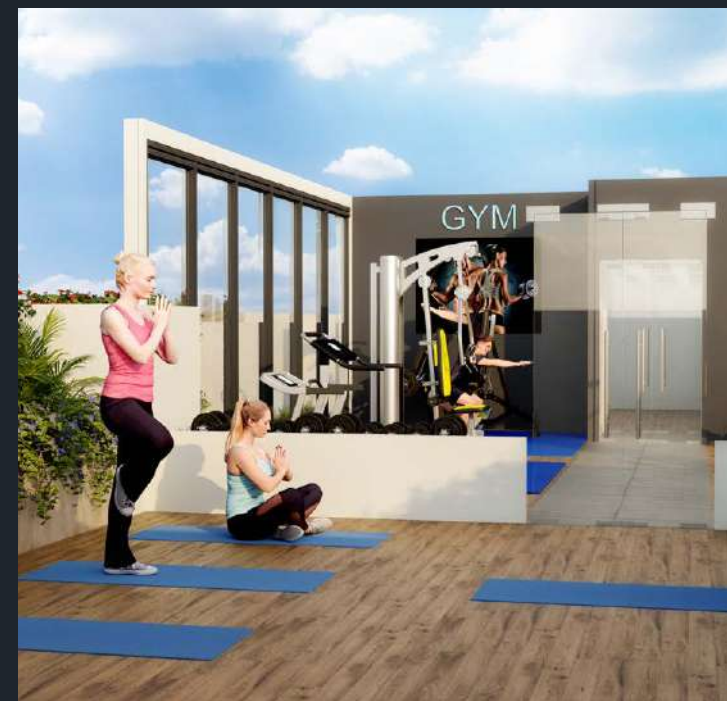
SKYRA  
EVERSHINE

1 & 2 BHK Luxurious Homes  
at Chande, Pune



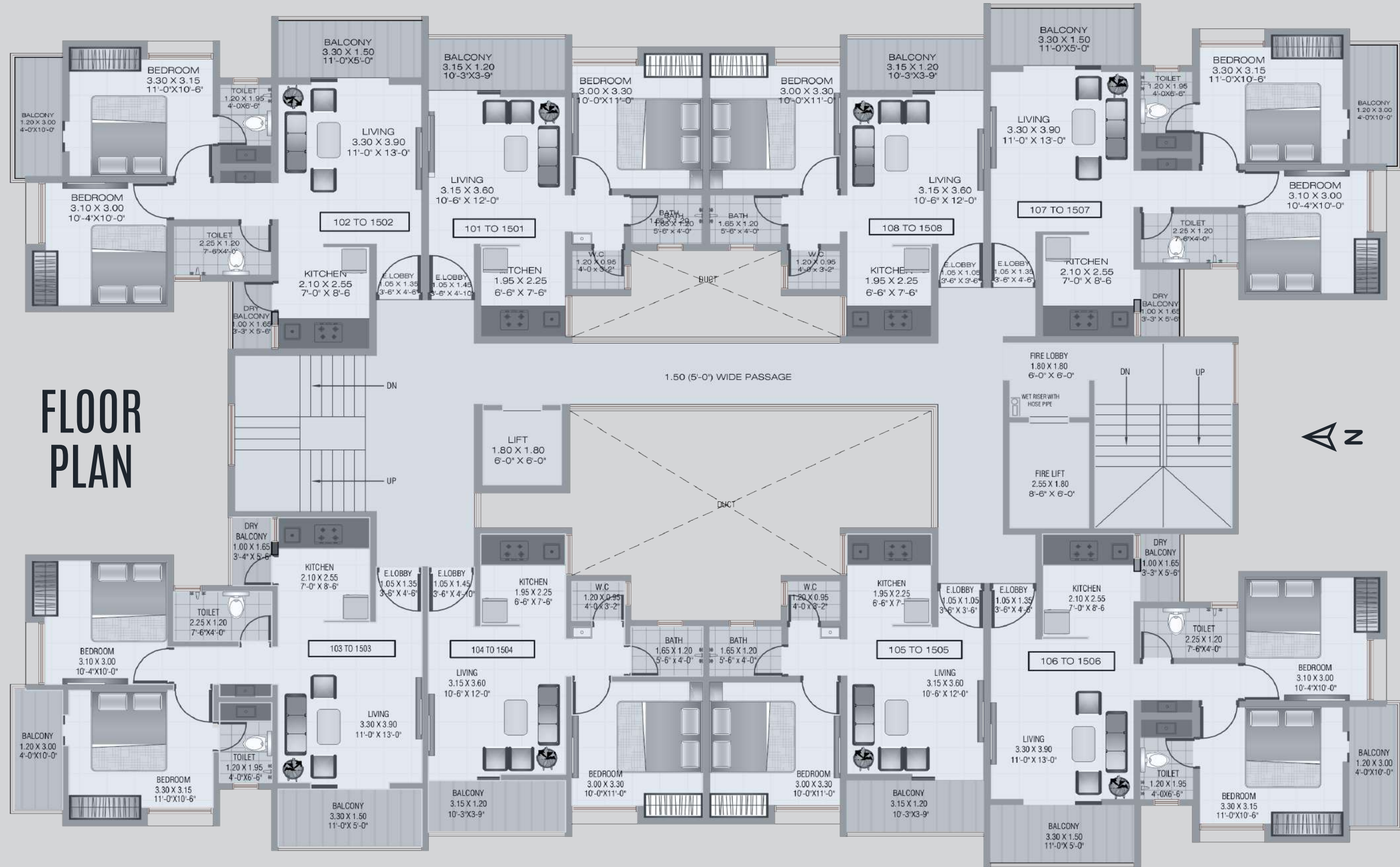
**SKYRA**  
EVERSHINE

\*Artist Impression



\*ALL PICTURES SHOWN ARE FOR ILLUSTRATION PURPOSE ONLY.

# FLOOR PLAN



Flat No.	TYPE	CARPET	OPEN BALC	DRY BALC	CUPBOARD	TOTAL CARPET
101 to 1501 & 104 to 1504	1 BHK	354.35	42.41	0.00	4.31	401.06
102 to 1502 & 103 to 1503	2 BHK	526.25	84.07	15.93	9.69	635.94
105 to 1505 & 108 to 1508 (805 For Refuse Area)	1 BHK	350.48	42.41	0.00	4.31	397.19
106 to 1506 & 107 to 1507	2 BHK	526.25	84.07	15.93	9.69	635.94



**Other Important Locations to be added to the Map :**

**Connectivity:**

- Proposed Maan metro station – 7 mins
- Proposed Balewadi metro station – 10 mins
- Railway station – 40 mins
- Airport – 45 mins

**Education & Work:**

- Druv Global school – 6 mins
- Vidya Valley school – 10 mins
- Symbiosis University, Lavale – 10 mins
- Global International school – 8 mins
- Hinjewadi IT park – 10 mins

**Healthcare:**

- Symbiosis Hospital, Lavale – 10 mins
- Jupiter Hospital, Balewadi – 12 mins

**Key areas:**

- Hinjewadi – 8 mins
- Baner & Balewadi – 10 mins
- Aundh – 15 mins
- Bavdhan – 10 mins

# Our Projects

<b>Completed Projects</b>	<b>Location</b>	<b>Year</b>
Pushpak Apartments	Chinchwadgaon, Pune	1996
Sajjan Plaza	Link Road, Chinchwad, Pune	1998
Pankuvar Heights	Talera Nagar, Chinchwad, Pune	2000
Sukhkarta Apartments	Pimpri, Pune	2002
Amolak Residency	Pimple Saudagar, Pune	2003
Shri Krishna Apartment	Uruli Kanchan, Pune	2004
Siddhivinayak Complex	Old Sangvi, Pune	2005
Ganesh Apartment	Chinchwadgaon, Pune	2007
Mangal Murti Apartment	Chinchwadgaon, Pune	2008
Akshay Apartment	New Sangvi, Pune	2011
Snehadeep Apartment	Shivane, Pune	2013
Kankariya Landmarks	Uruli Kanchan, Pune	2014
Vrundawan Apartment	Old Sangvi, Pune	2017
Sera Heights	Marunji, Pune	2021

## **On-going Projects**

	<b>Location</b>
Skyra Residency	Balewadi, Pune
Skyra Evershine	Chande, Pune
Skyra Residential Plots	Chande, Pune
Skyra Farmhouse Plots	Uruli Kanchan

## **Upcoming Projects**

	<b>Location</b>
Skyra	Baner
Skyra Farmhouse Plots	Saswad, Pune



## Experience Luxury

Presenting luxury living in West Pune's finest address at Skyra Evershine. Designed immaculately, the project offers 1 & 2 BHK apartments that your friends can't envy enough. An address that you have been waiting to put your name on.

---



MAHA-RERA Regn.  
No.:P52100028551  
Available at : www.mahare-ra.mahaonline.gov.in

A MEMBER OF  
**CREDAI**  
PUNE METRO

A PROJECT BY



anil kankariya  
DEVELOPERS

**SKYRA**  
EVERSHINE

📍 **Office & Site Address** - Gat No. 116, Sus - Hinjewadi Road,  
Village Chande, Taluka Mulshi, District Pune Pincode: 412115

☎ **8484 018 789 / 8484 014 789**

Exclusive Marketed by



**Disclaimer:** The Materials contained in this brochure should not be considered an offer and are solely of an informational nature. the references, images, advertising or declarations made here in are informational only. and not to be interpreted in any other manner. The developer (Anil Kankriya developers and/or its affiliates and/ or it's subsidiaries) reserves the right to make any modifications to the materials, specifications, plans, designs and delivery of the residences advertised here, without any prior notice. All of the specifications contained herein, including technical, promotional, related to images or of any other nature are the property of Anil Kankriya developers and/ or its affiliates and/or its subsidiaries and such specifications may not be used by any person, including an individual entity, without the prior written consent of Anil Kankriya developers and/or its affiliates and/or its subsidiaries.



# Skyra Evershine

## Specifications

### Construction:

- Earthquake-resistant framed structure conforming to IS code
- All walls internally finished with gypsum finish
- All external walls with double coat cement plaster
- Graceful entrance gate

### Electrical Specifications:

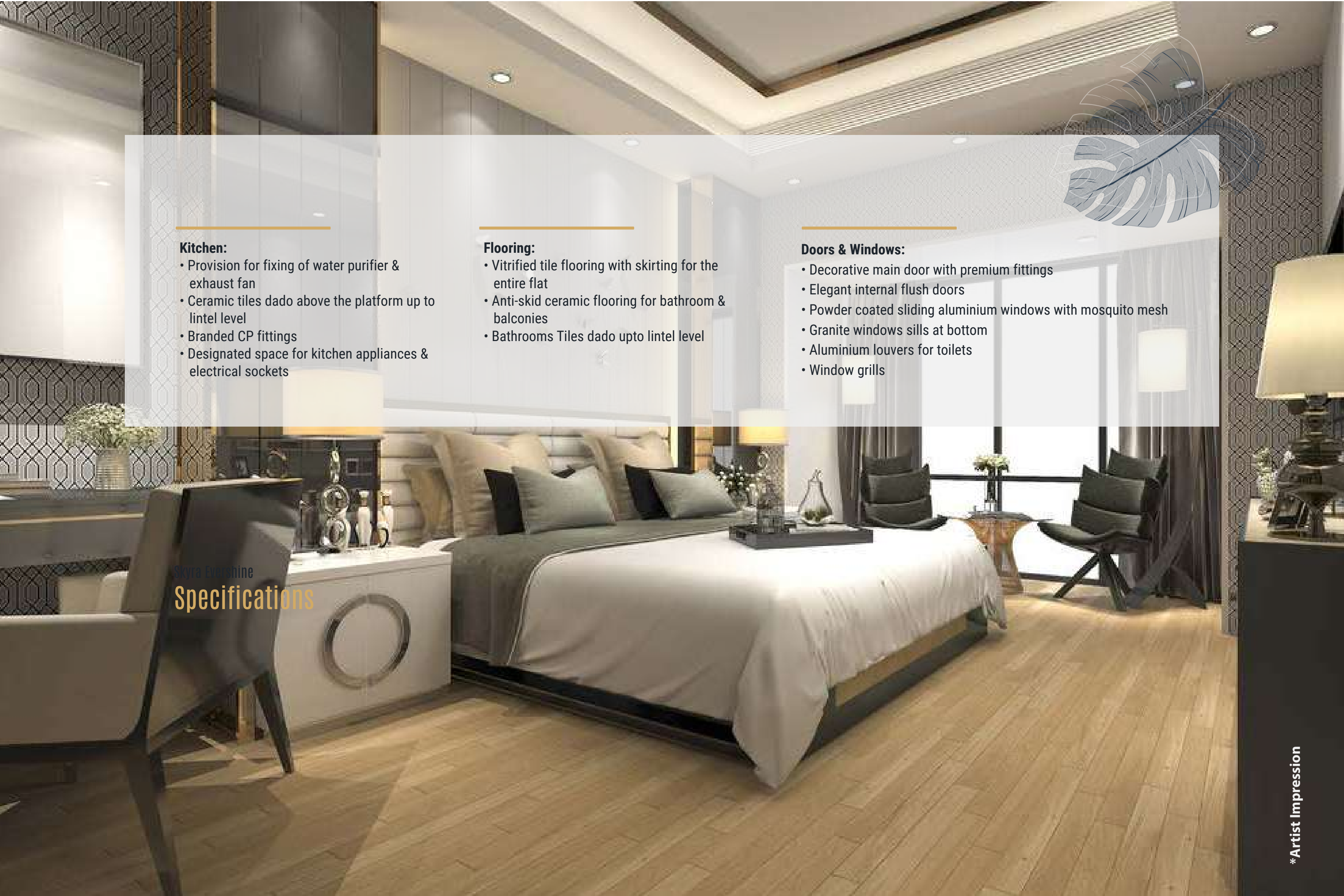
- Premium quality modular switches
- Concealed copper wiring with main circuit breakers
- Television points in living room
- Provision for geyser in all bathrooms.

### Paint:

- External: acrylic paint for long life
- Internal: oil bound distemper

### Utility Area - Dry Balcony:

- Inlet/ outlet provision for washing machine
- Ceramic tiles for floor and dado up to 3 ft height



### Kitchen:

- Provision for fixing of water purifier & exhaust fan
- Ceramic tiles dado above the platform up to lintel level
- Branded CP fittings
- Designated space for kitchen appliances & electrical sockets

### Flooring:

- Vitrified tile flooring with skirting for the entire flat
- Anti-skid ceramic flooring for bathroom & balconies
- Bathrooms Tiles dado upto lintel level

### Doors & Windows:

- Decorative main door with premium fittings
- Elegant internal flush doors
- Powder coated sliding aluminium windows with mosquito mesh
- Granite windows sills at bottom
- Aluminium louvers for toilets
- Window grills

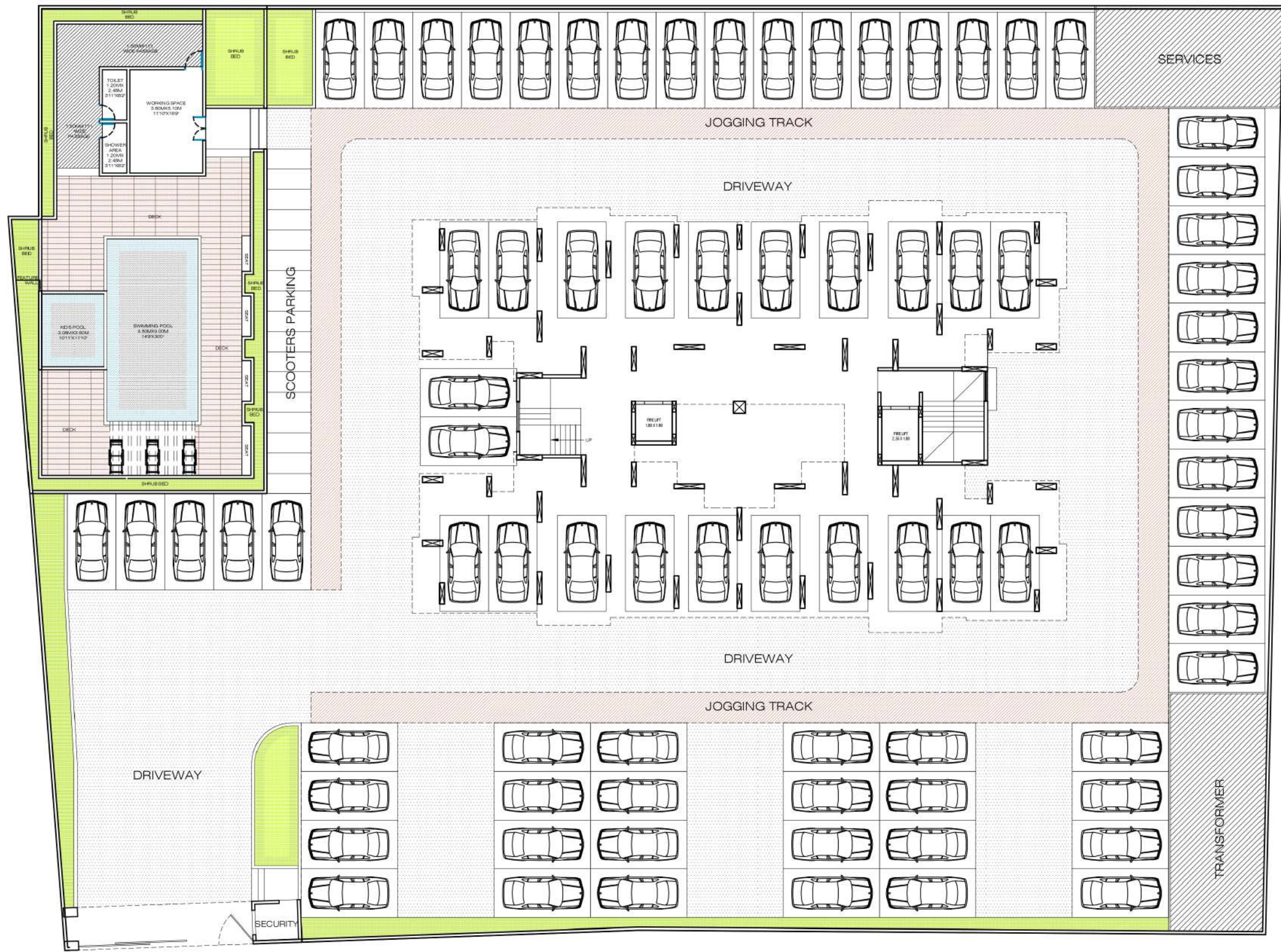
Skyra Evershine  
**Specifications**



**1 BHK** Top View  
Floor Plan



**2 BHK** Top View  
Floor Plan



# PARKING PLAN

12.00 M. WIDE ROAD



# Relish the Elegance

Luxurious Apartments located in the heart of Pune West, close proximity to the neighbourhood of Baner and Balewadi, located parallel to the Mumbai-Bengaluru National Highway, very close to the IT Hub of Hinjewadi, Aundh and of course, Mumbai.

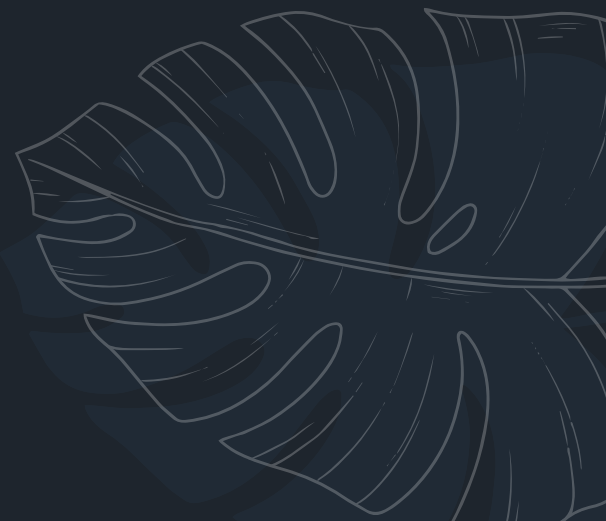
A blend of luxury, convenience and security, this address is thoughtfully designed to take care of every element in your life.

Reach your work place in minutes, get out of town in a jiffy, or visit a plethora of hangout options nearby. When living at Skyra Evershine, nothing shall seem too far. Come experience the tranquillity and relish in the elegance that Skyra Evershine offers to you exclusively.







Make the  
Joys of  
A Perfect life,  
Your own

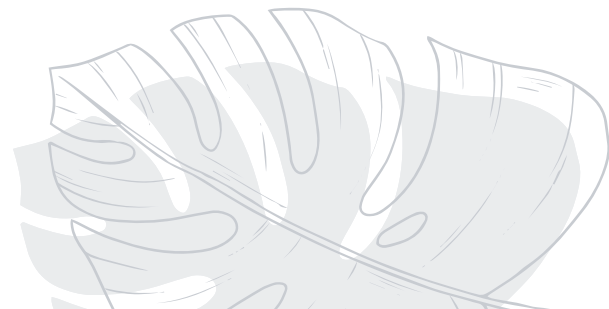






Life at  
**SKYRA**  
EVERSHINE

-  **MAGNIFICENT VIEW**
-  **SUSTAINABLE LIFE**
-  **VIBRANT NATURE**
-  **PEACEFUL SURROUNDING**





# Aminities of the project

- Swimming Pool
- Kids Pool
- Indoor Games
- Library Area
- Yoga Area
- Meditation Area
- Star Gazing Deck
- Bonfire Area
- Barbeque Area
- Gym
- Party Lawn
- Co-Working Space
- Visitors Drop-Off & Pickup Zone
- Jogging & Walking Path
- Fire Fighting System
- Grand Entrance Gate
- Multi-purpose Hall
- Children Play Area
- 2 High-speed Premium Elevators
- Solar Water Heater System
- Wi-fi Connectivity
- DTH Connectivity
- Driver / Staff Washroom
- Large Windows Openings For Perfect Ventilation & Ample Sunlight
- CCTV Surveillance System
- Many More...